

# CEDAR HOUSE

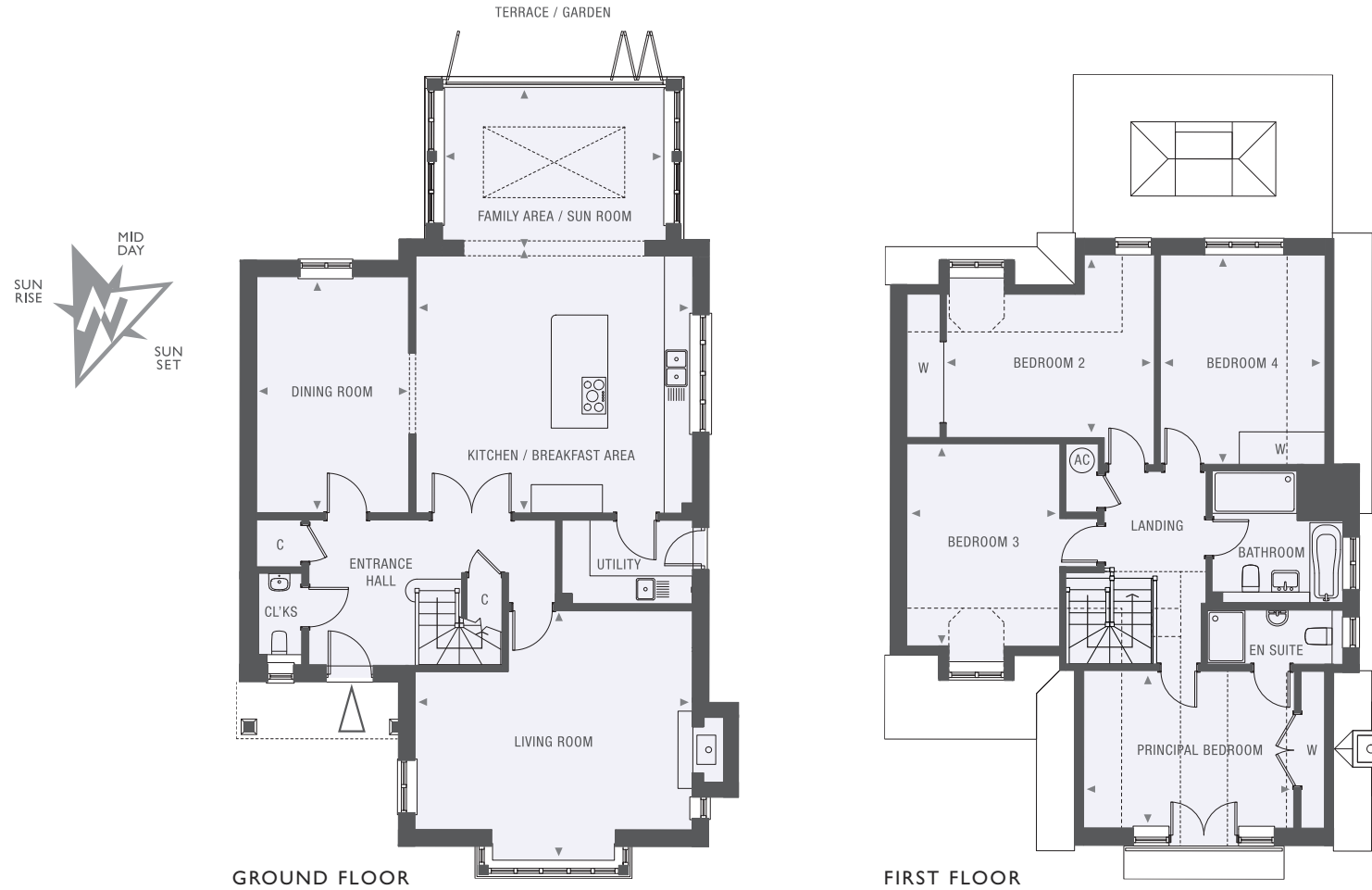
NO.1 LONGACRE RISE, LITTLE BOOKHAM,  
LEATHERHEAD, SURREY KT23 4SG



Computer generated artist's impression - indicative only.

# CEDAR HOUSE

NO.1 LONGACRE RISE, LITTLE BOOKHAM, LEATHERHEAD, SURREY KT23 4SG



**FOUR BEDROOM DETACHED HOME OVER 2 LEVELS WITH SUN ROOM,  
LANDSCAPED GARDEN, TERRACE AND PRIVATE DRIVEWAY PARKING.**

GROSS INTERNAL AREA: 212.1 SQ M / 2,283 SQ FT

Kitchen / Breakfast Area	5.9m x 5.5m	19'4" x 18'	Principal Bedroom	4.8m x 3.4m	15'9" x 11'2"
Family Area / Sun Room	4.8m x 3.2m	15'9" x 10'6"	Bedroom 2	4.3m x 3.9m	14'1" x 12'9"
Dining Room	5.0m x 3.2m	16'5" x 10'6"	Bedroom 3	4.3m x 3.2m	14'1" x 10'6"
Living Room	5.9m x 5.3m	19'4" x 17'5"	Bedroom 4	4.4m x 3.6m	14'5" x 11'10"

Drawings are not to scale and indicative only. All dimensions are approximate and follow the room arrows.