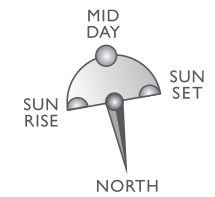
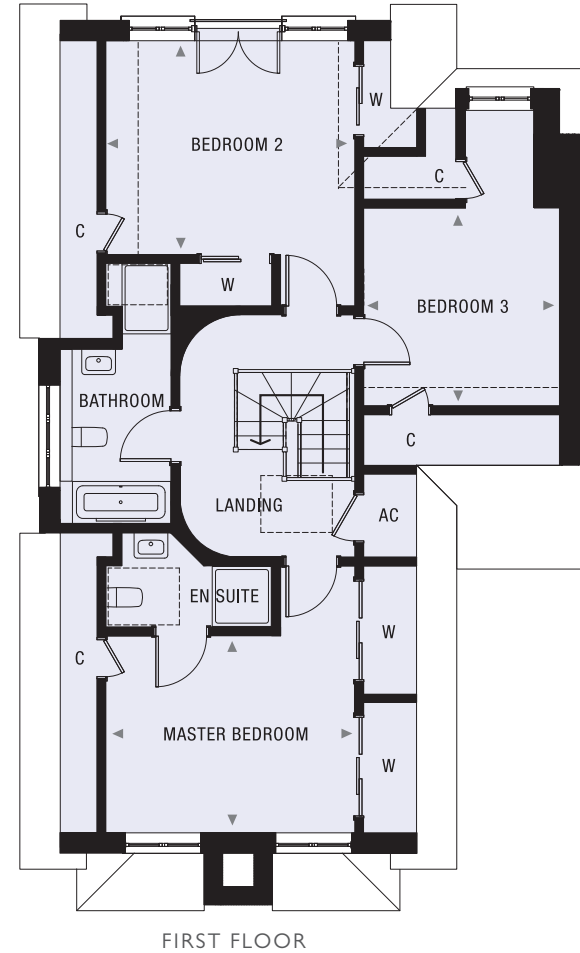
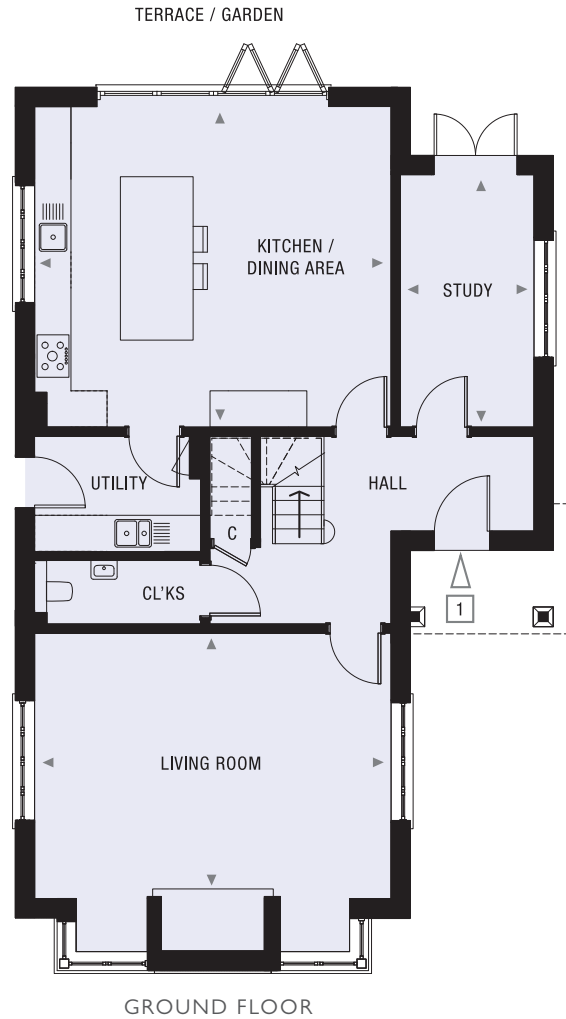


# THOROW - No.1 FIRCROFT PLACE

THREE BEDROOM DETACHED HOME OVER 2 LEVELS WITH PRIVATE LANDSCAPED TERRACE/GARDEN AND PARKING.  
162 SQ M / 1,745 SQ FT



Dimensions	Metric	Imperial	Dimensions	Metric	Imperial
Kitchen / Dining Area	5.9m x 5.3m	19'3" x 17'3"	Master Bedroom	4.1m x 3.3m	13'5" x 10'10"
Study	2.2m x 4.2m	7'7" x 13'9"	Bedroom 2	4.1m x 3.5m	13'5" x 11'6"
Living Room	5.9m x 4.4m	19'3" x 14'5"	Bedroom 3	3.3m x 3.3m	10'10" x 10'10"

Drawings are not to scale and indicative only. All dimensions are approximate and are represented by the room arrows positioned in the respective rooms.