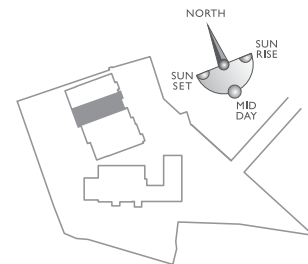
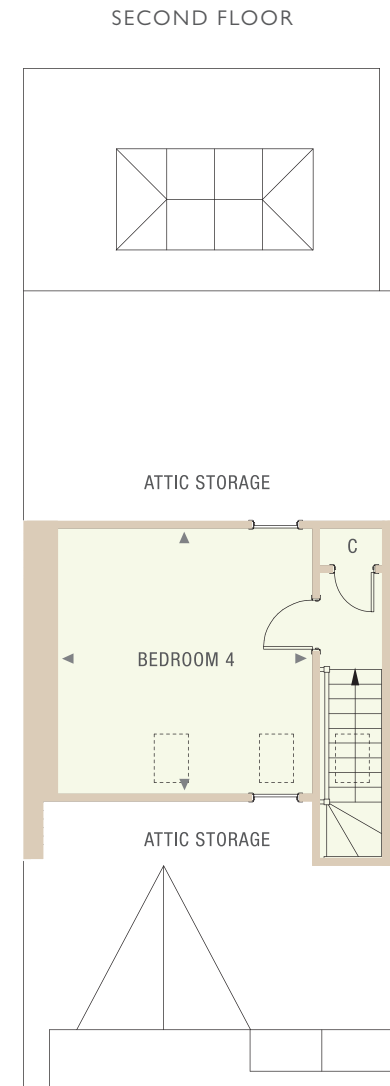
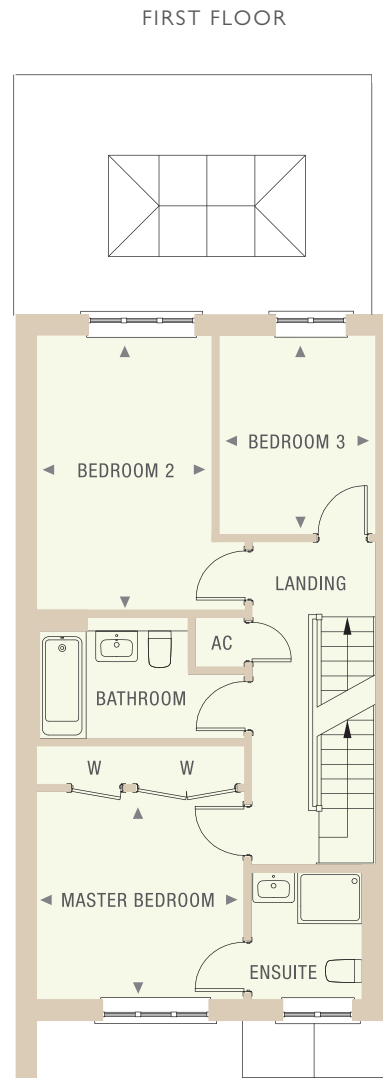
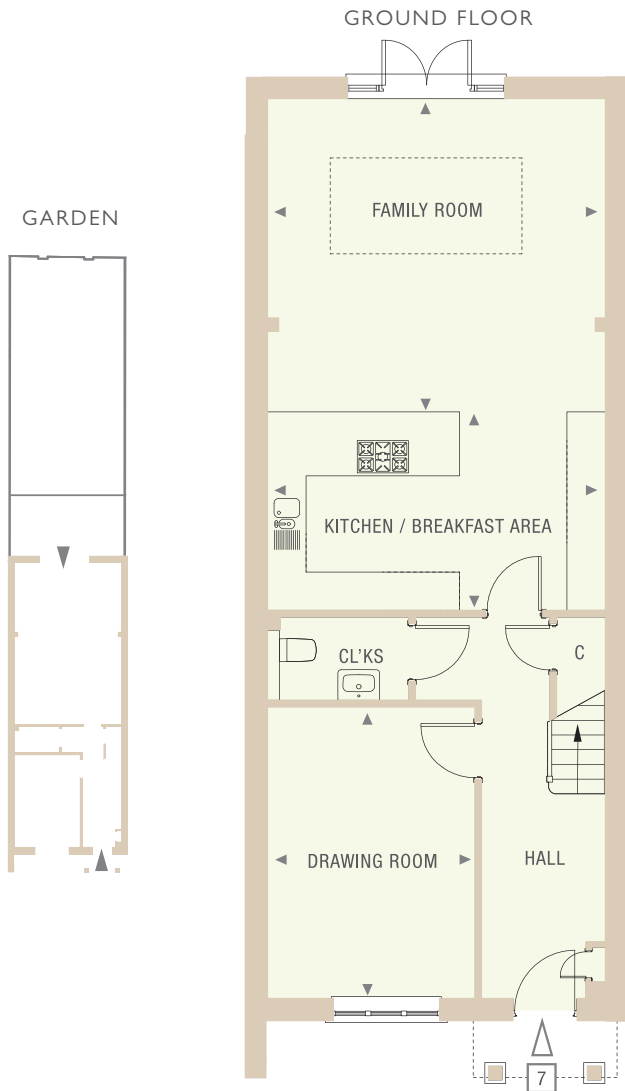


No.7 - MEWS HOUSE

FOUR-BEDROOM HOME OVER 3-LEVELS WITH PRIVATE LANDSCAPED TERRACE/GARDEN AND PARKING
 GROSS INTERNAL AREA: 153.3 SQ M / 1650 SQ FT



| Dimensions | Metric | Imperial |
|--------------------------|-------------|----------------|
| Kitchen / Breakfast Area | 5.2m x 4.4m | 17'1" x 14'5" |
| Family Room | 5.2m x 3.6m | 17'1" x 11'10" |
| Drawing Room | 3.3m x 4.6m | 10'10" x 15'1" |

| Dimensions | Metric | Imperial |
|----------------|-------------|---------------|
| Master Bedroom | 3.2m x 3.2m | 10'6" x 10'6" |
| Bedroom 2 | 2.8m x 4.3m | 9'2" x 14'1" |
| Bedroom 3 | 2.5m x 3.2m | 8'2" x 10'6" |

| Dimensions | Metric | Imperial |
|------------|-------------|---------------|
| Bedroom 4 | 4.0m x 4.1m | 13'1" x 13'5" |

Drawings are not to scale and indicative only. All dimensions are approximate and are represented by the room arrows positioned in the respective rooms.