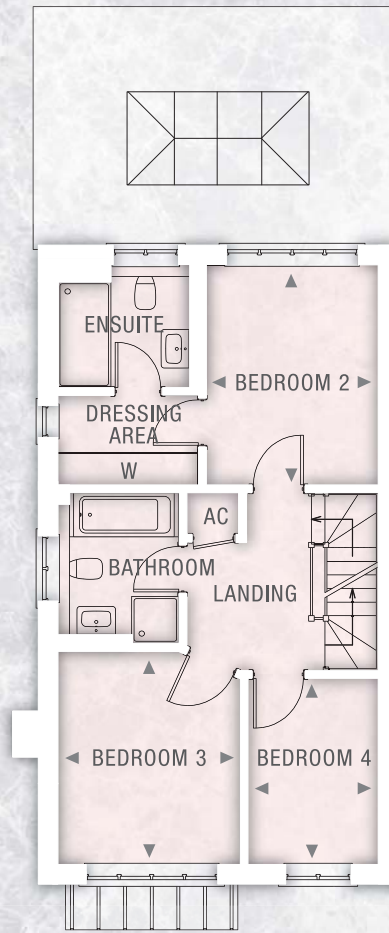
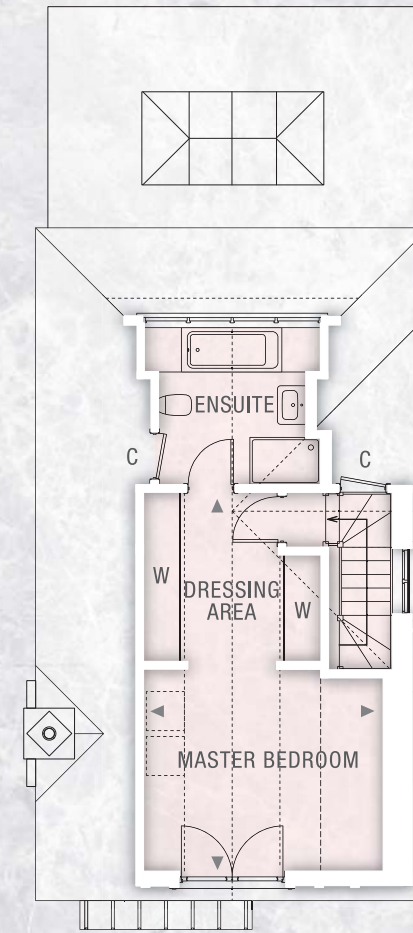


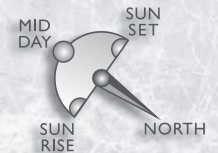
GROUND FLOOR



FIRST FLOOR



SECOND FLOOR



No.3 BEECH GROVE

FOUR BEDROOM DETACHED HOME OVER 3-LEVELS WITH PRIVATE DRIVEWAY, PARKING AND LANDSCAPED REAR GARDEN

Dimensions	Metric	Imperial
Kitchen / Dining Room	5.4m x 3.9m	17'9" x 12'10"
Family Room	5.4m x 3.9m	17'9" x 12'10"
Drawing Room	3.3m x 5.1m	10'10" x 16'9"

Dimensions	Metric	Imperial
Bedroom 2	2.9m x 3.3m	9'6" x 10'10"
Bedroom 3	3.1m x 3.6m	10'2" x 11'10"
Bedroom 4	2.2m x 3.1m	7'3" x 10'2"

Dimensions	Metric	Imperial
Master Bedroom	4.0m x 6.4m	13'1" x 21'0"

Gross Internal Area: 152 sq m / 1636 sq ft

Drawings are not to scale and indicative only. All dimensions are approximate and are represented by the room arrows positioned in the respective rooms.