

10 QUARRY STREET

Latchmere once again returns to Guildford with its latest collection of homes, which enjoy a highly privileged location. Watched over by the ruins of the Royal Castle, many of the development's surrounding buildings still have a Medieval core, fronted by handsome Georgian façades. Yet, within a few hundred yards of this timeless backwater, you reach the hustle & bustle of the town's attractive cobbled High Street. Here you will find an eclectic mix of department stores, boutiques, eateries, coffee bars and pubs.

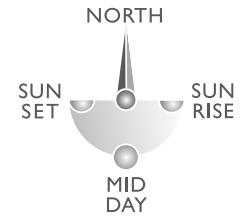
10 Quarry Street is the perfect fusion of old and new. Latchmere has managed to retain the elegant Georgian exterior, whilst masterfully re-working the interior to develop just three individual, stylish and contemporary living spaces, two of which enjoy westerly views.



LATCHMERE

10 QUARRY STREET

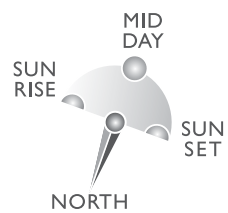
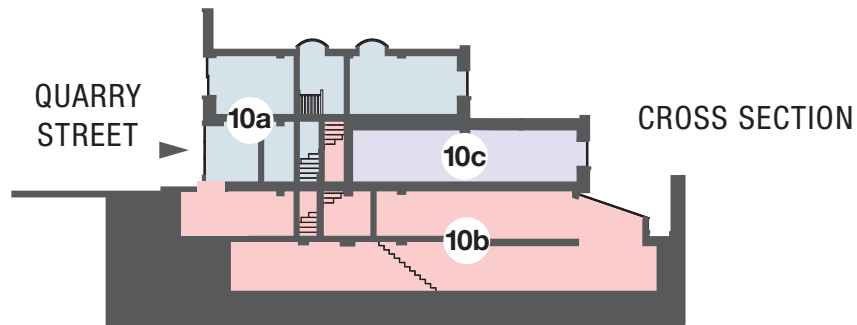
LOCATION PLAN



Drawings are not to scale and indicative only.

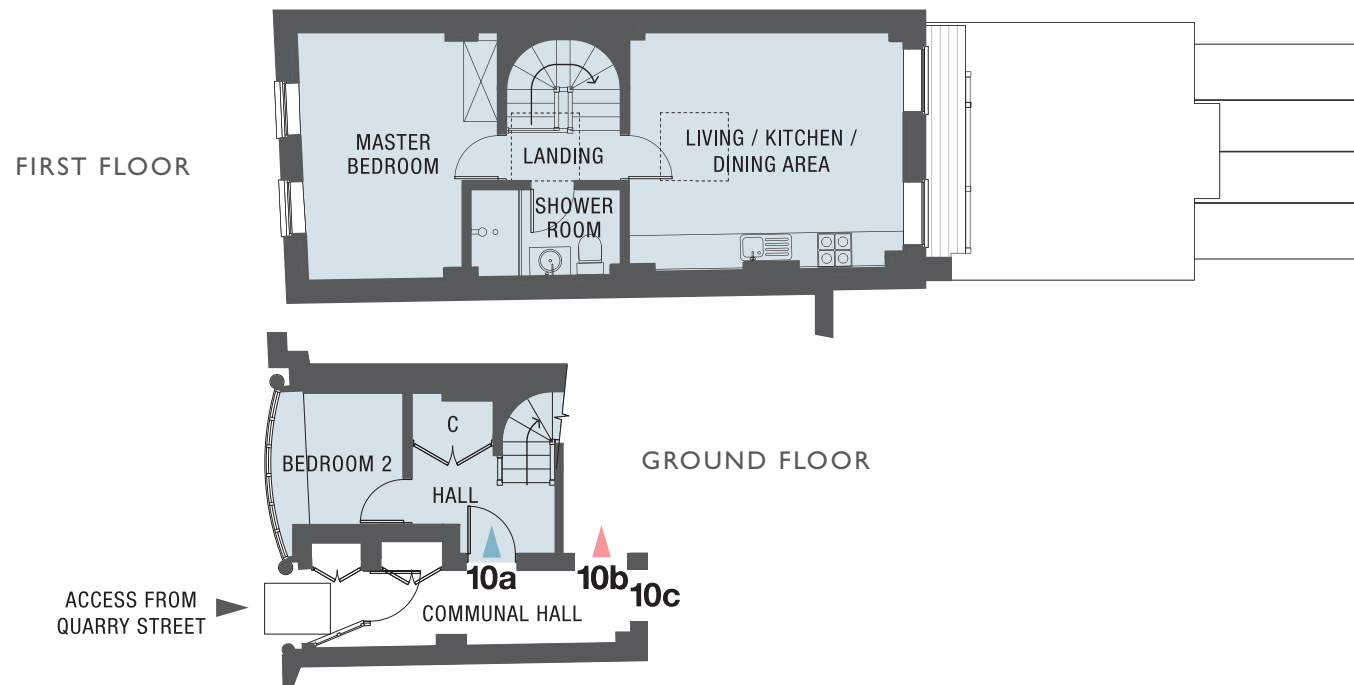
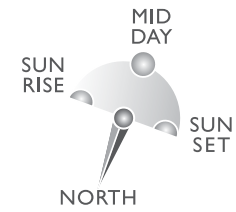
10 QUARRY STREET

PROPERTY POSITIONS



10 QUARRY STREET APARTMENT 10a

TWO BEDROOM DUPLEX APARTMENT

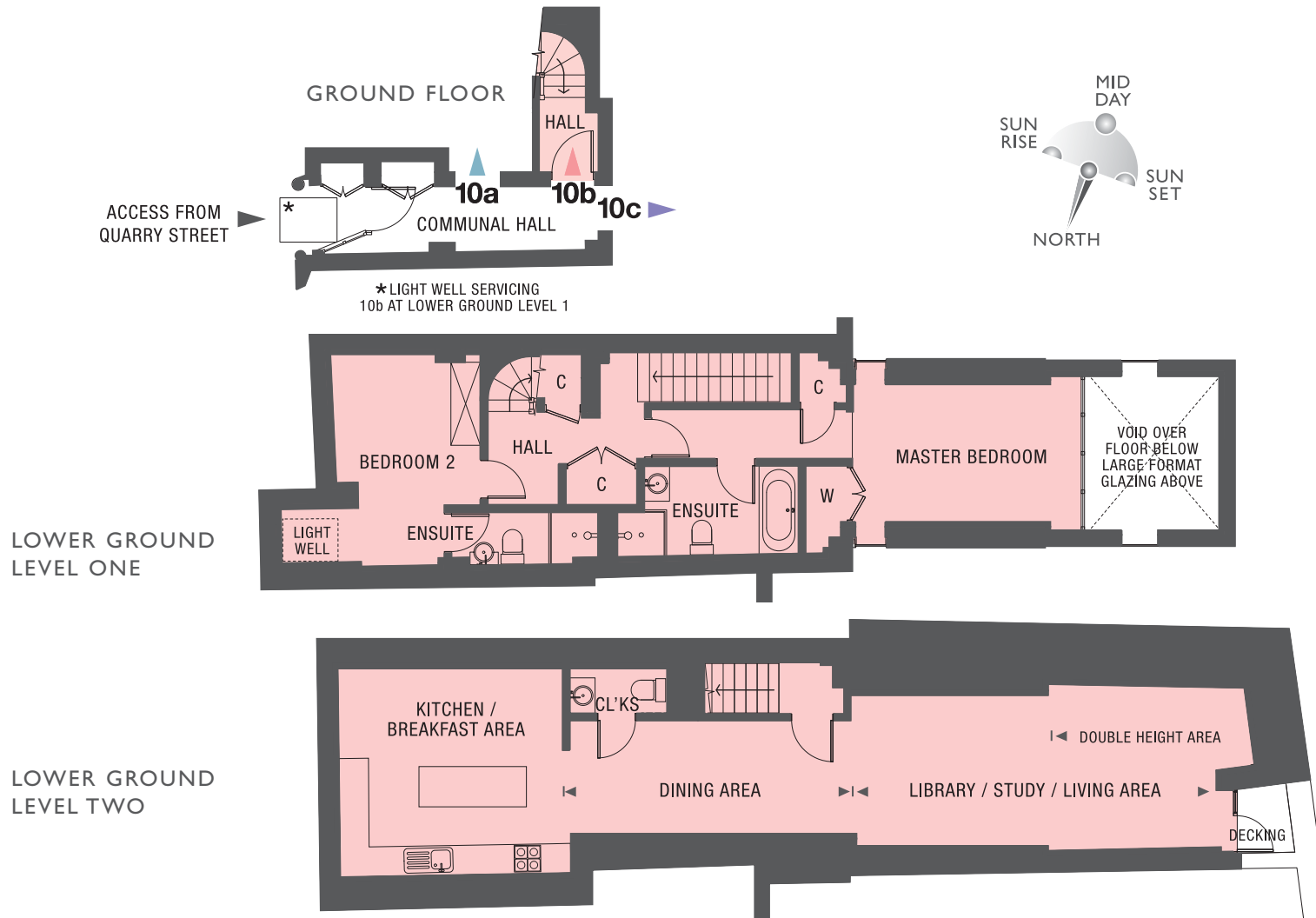


Dimensions	Metric	Imperial
Living / Kitchen / Dining Area	4.8m x 4.1m	15'10" x 13'6"
Master Bedroom	3.5m x 4.3m	11'7" x 14'2"
Bedroom 2	2.3m x 2.3m	7'7" x 7'7"

Gross Internal Area: 51 sq m / 550 sq ft

10 QUARRY STREET APARTMENT 10b

TWO BEDROOM DUPLEX APARTMENT

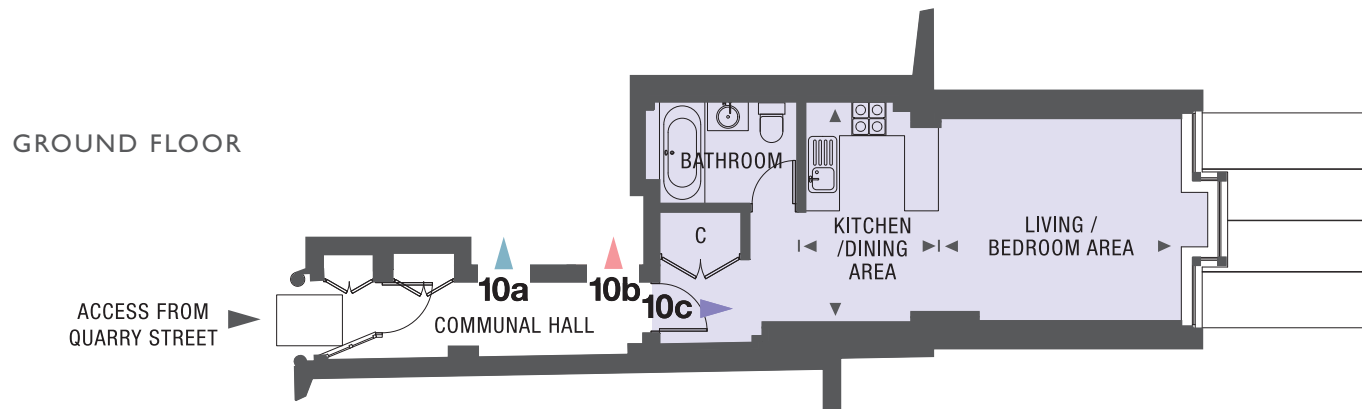
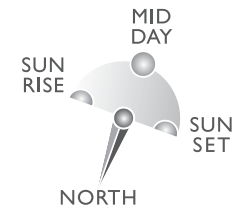


Dimensions	Metric	Imperial	Dimensions	Metric	Imperial
Kitchen / Breakfast Area	4.5m x 4.2m	14'10" x 13'10"	Master Bedroom	5.6m x 3.1m	18'6" x 10'3"
Dining Area	5.7m x 2.3m	18'10" x 7'7"	Bedroom 2	2.9m x 4.2m	9'7" x 13'1"
Library / Study / Living Area	8.1m x 3.3m	26'9" x 10'11"			

Gross Internal Area: 111.5 sq m / 1200 sq ft

10 QUARRY STREET APARTMENT 10c

STUDIO APARTMENT



Dimensions	Metric	Imperial
Living / Bedroom Area	4.2m x 3.6m	13'10" x 11'11"
Kitchen / Dining Area	3.4m x 3.8m	11'3" x 12'6"

Gross Internal Area: 35.4 sq m / 380 sq ft