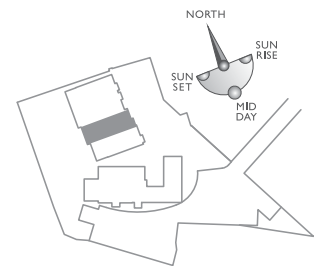
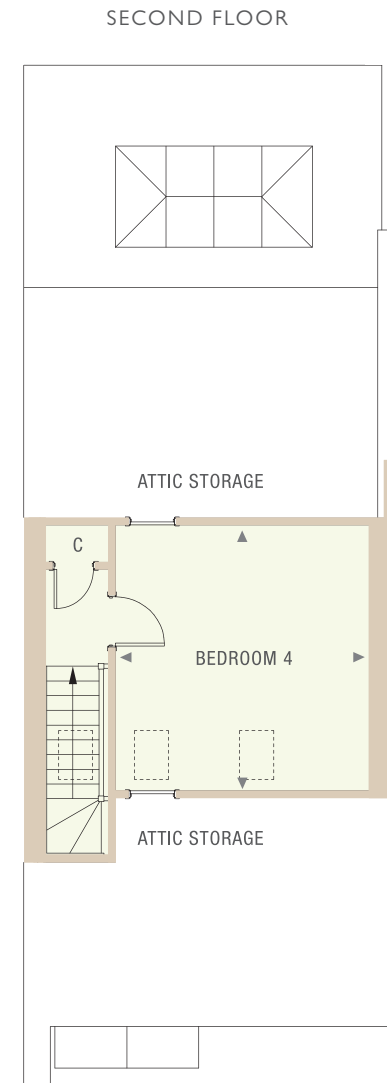
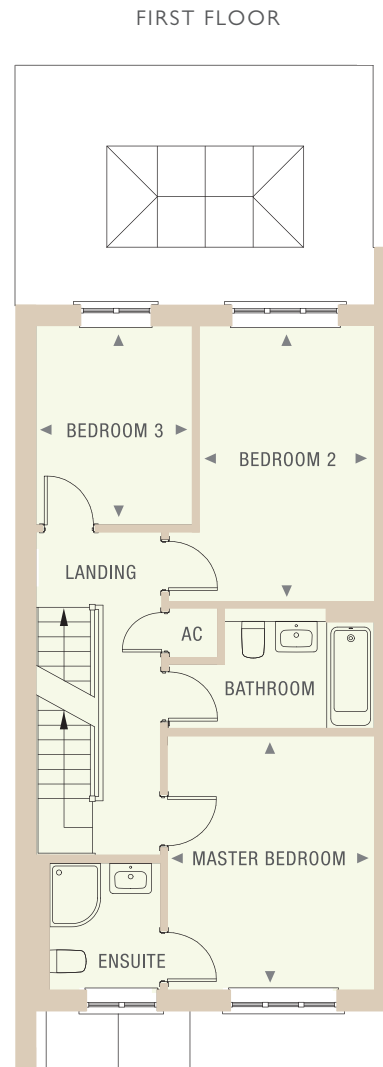
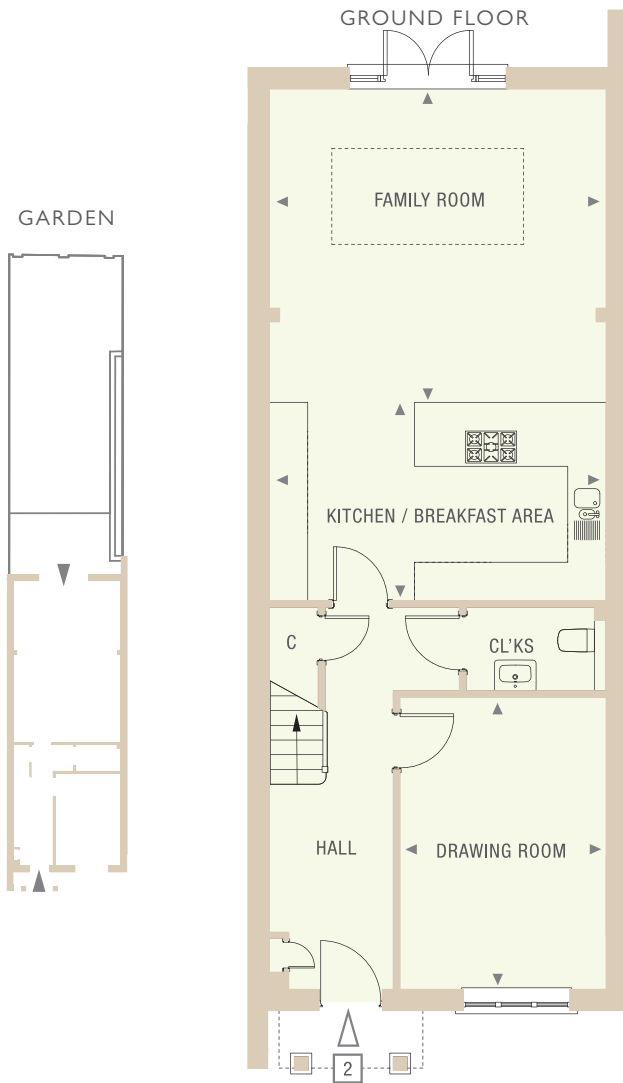


No.2 PILGRIM MEWS

FOUR-BEDROOM HOME OVER 3-LEVELS WITH PRIVATE LANDSCAPED TERRACE/GARDEN AND OFF-STREET PARKING
GROSS INTERNAL AREA: 153.3 SQ M / 1650 SQ FT



Dimensions	Metric	Imperial	Dimensions	Metric	Imperial	Dimensions	Metric	Imperial
Kitchen / Breakfast Area	5.2m x 4.4m	17'1" x 14'5"	Master Bedroom	3.3m x 4.1m	10'10" x 13'5"	Bedroom 4	4.0m x 4.1m	13'1" x 13'5"
Family Room	5.2m x 3.6m	17'1" x 11'10"	Bedroom 2	2.8m x 4.3m	9'2" x 14'1"			
Drawing Room	3.3m x 4.6m	10'10" x 15'1"	Bedroom 3	2.5m x 3.2m	8'2" x 10'6"			

Drawings are not to scale and indicative only. All dimensions are approximate and are represented by the room arrows positioned in the respective rooms.